

# Miscellaneous Slides

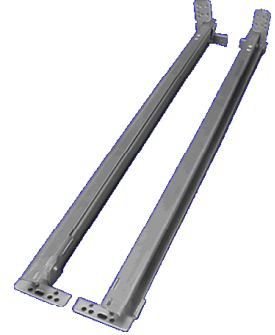
# Maverick Hardware

## Miscellaneous Slides

### Go E-Z Bottom Mount Drawer Slide

#### 50 lb Capacity \* 3/4" Extension

Concealed system mounts to bottom of drawer for maximum drawer width and a clean side appearance. No visible hardware. Captive channel track for reduced side play and accurate, easy installation. Offers 4 point suspension which provides lateral adjustability. Allows 3/8" minimum space under drawer bottom for slide mounting. Requires 1/4" top clearance and 3/16" bottom clearance between drawer and opening. Dual detent stop provides a safety stop and open lock access. Steel track and axles with polypropylene wheels. Slides mount with staples or screws. Rear brackets allow for rail mounting. Satin bright finish. Sold per pair.



<u>Part #</u>	<u>Length</u>
HO522	22"

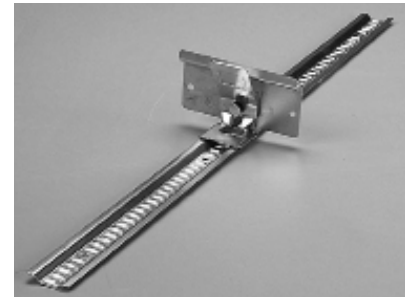
### Drawer Accessories

#### Index Followers and Track

When mounted, plate is 2 11/16" from track and 4 3/4" wide



<u>Part #</u>	<u>Description</u>	<u>Finish</u>
KV475F	Card-sized index follower	Anochrome
KV476F	Letter Size	---
KV476T	26" Track for followers	---



**Solid Wood Breadboards**

These solid hardwood breadboards are electronically laminated to assure permanent glue lines. They are sealed to resist moisture penetration. Available in 3/4" thickness by 22" lengths in widths of 18" 24" and 30".

<u>Part #</u>	<u>Description</u>
BBDA18	Alder / Oak
BBDA18CH/CH	Cherry / Cherry
BBDA18MA/MA	Maple / Maple
BBDA24	Alder / Oak
BBDA24CH/CH	Cherry / Cherry
BBDA24MA/MA	Maple / Maple
BBDA30CH/CH	Cherry/ Cherry
BBDA30MA/MA	Maple/Maple



**Breadboard Channels**

**VT70 & VT80 White**



"Glide Embosses" located at front of channel legs to prevent edge of leg scarring board surface. Roll-formed channel section with full length ribs to prevent board scraping screw head or edge of channel.

**VT70** Pre-notched tail section secures to rear of cabinet for face frame.

**VT80** Channel length and screw hole location for frameless, metrically pierced side panels.



**100 Series Bread Board Slides**

**HO100 21 1/2"**

Bread board slide permits convenient storage of cutting board. Non-handed channels easily mount to face frame or panel style cabinet.



**Flexa Touch Drawer Opener**

**BA1021**

Designed to allow drawers to be opened just by pushing on the front. Easy to install. Adjustable for flush alignment. Adjustment 7/8" with 2 1/8" minimum to 3" maximum.



# Maverick Hardware

## Miscellaneous Slides

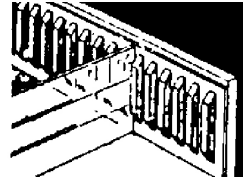
### Alinor Metal Table Aligners

WWLL103 Table Aligners  
 Holds table halves securely together and aligns table top sections side to side and top to bottom. The possibility of table tops creeping open due to vibration is reduced. Helps control alignment if warping occurs. Three sets of aligners are recommended for 30"-42" wide tables. Four sets for 48" wide tables. Sold per each, 100 per box.



### Binning Strips

A versatile plastic strip for installation in drawers, in counters, tables and cabinets. Install with nails, staples or glue. 2 3/4" tall x 60" long x 1/4" spaces. Sold per each, 10 per box.



<b>Part #</b>	<b>Color</b>
OW282-BK	Black
OW282-WH	White

### Drawer Accessories

#### Label Holders

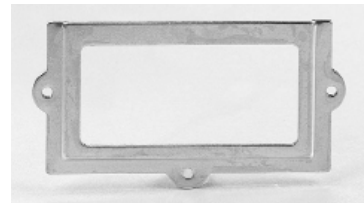
**KV701:** For card dimension of 2" x 1"  
**KV704:** For card dimension of 2 15/16" x 1 1/2"



<b>Part #</b>	<b>Dimensions</b>	<b>Finish</b>
KV701	2 5/8" X 1 7/16"	Anochrome
KV704	3 1/2" x 1 3/4"	Anochrome



KV704



KV701

### Kinetron

#### Hanging File Brackets

##### Features

- A simple, less costly alternative to cumbersome assemblies that sit inside the drawer.
- Mounts inside any file drawer
- Holds 1/8" file bars
- Strong 16 gauge steel
- Easy to install – no cutting, no grooves
- Available in zinc or black oxide finish



<b>Part #</b>	<b>Description</b>
KIK1-ZC	Overtop 1/2" Thick Frame
KIK2-ZC	Flush Mount
KIK3-ZC	Top Mount
KIFR-8	File Rail (1/8" x 1/2" x 96")

