

Section J-2: Glides and Levelers

# Glides and Levelers

Section J-2: Glides and Levelers

# Maverick Hardware

## Glides and Levelers

### Light Duty Glides

#### Adjustable

Suggested applications: residential, RTA furniture, and store fixtures.

#### Monaco

Incorporates the aesthetic appeal of a metal shell with the smooth sliding properties of a plastic base that contracts floors (linear polyethylene). Base diameter is 1 1/8". Sold per each, 100 per box.

**ITW**Plastiglide



Part #	Thread Size	Stud Length	Base Diameter	Base Color	Shell Finish
P7430	5/16" - 18	5/16" - 18 x 1	1 1/8"	White	Nickel

### Medium Duty Glides

#### Adjustable

Suggested applications: commercial equipment, panel systems, medical equipment.

#### Samson

A non-skid glide designed for floor gripping action. The stud is molded into a durable, non-marking, non-skid resilient cushion. The cushioned stud provides a unique silencing action. Base material - elastomeric poly. Base diameter is 1 1/8". Sold per each, 100 per box. Base height 1/2".

**ITW**Plastiglide



Part #	Thread Size	Base Dia.	Stud Length	Base Color
P6740	1/4"-20	1 1/8"	1"	Black
P6741	5/16"-18	1 1/8"	1"	Black
P6744	3/4" - 16	1 1/8"	1"	Black

### Steel Base Adjustable Glides

#### Cushioned Base Style Nickel Plated Steel with Black Vinyl Plastic Cushion

Part #	Stud Length	Base Diameter
P7507	1/4" - 20 x 1	7/8"



### Swivel Adjustable Levelers

These levelers gives you extra flexibility with a bolt that swivels in the base to 6° from vertical. The nickel plated 3/8-16 bolt is slotted at the top and has a hex shoulder at the bottom for adjustment from inside or outside the cabinet. Made of polyethylene.

Part #	Thread	Length
P33-7500	3/8-16	1 1/2"
P33-7520	3/8-16	3"

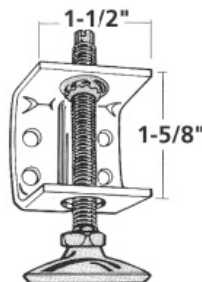
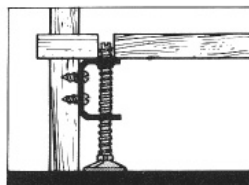


### 3/8" Double Angle Bracket

#### FT40601

Features:

- Adjustable glide with 3/8" thread
- Hole diameter 1/2"
- Dimensions: 42 x 37 x 3mm
- 4 holes 5mm diameter
- Zinc plated



**U.S. Futaba, Inc.**

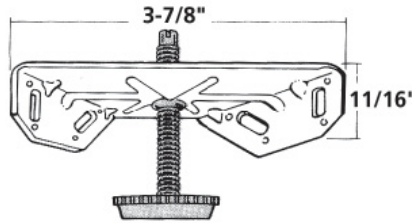
Glides and Levelers

**3/8" Corner Bracket**

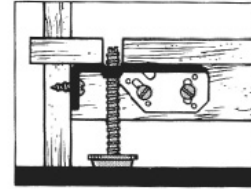
**FT40801**

Features:

- Adjustable glide with 3/8" thread
- Height 11/16"
- Material thickness 1.2mm
- Zinc plated



**U.S. Futaba, Inc.**



**Heavy Duty Glides**

**Non-Adjustable**

Suggested applications: conference tables, main frame computers, athletic fitness equipment, store fixtures, commercial equipment, major applications.

**Titan**

An elegant, heavy-duty glide for straight legs with a fixed stud. Plastic base contacts the floor. Hex nut adjustment. Base diameter is 1 3/8" sold per each, 100 per box.

**U.S. Futaba, Inc.**



<u>Part #</u>	<u>Thread Size</u>	<u>Stud Length</u>	<u>Color</u>	<u>Shell Finish</u>
P53941	1/4" - 20	1"	White	Nickel

**T-Nuts**

Adds Strength when used with screw-in glides.

<u>Part #</u>	<u>Thread Size</u>	<u>Drill Size</u>	<u>Flange Diameter</u>
ST-142054T	1/4"x 20	5/16"	3/4"
ST-561864T	5/16"x 18	3/8"	3/4"
ST-381674T	3/8"x 16	7/16"	1"



**Ball Caster for Furniture Swivels**

**HA661.02.250**

Free running (non-swiveling). Chrome steel balls run on a ball cage assembly. Metal housing and call with screw-on mounting plate. Articles fitted with ball casters, such as sewing machine cabinets or occasional furniture, can be moved in any direction at will. 25mm ball diameter. 45mm overall diameter. Load carrying capacity: 37.4 lbs per cater. Steel, chrome-plated housing finish with reinforced base around a chrome steel ball. Sold per each, 20 per box.

**HÄFELE**



# Maverick Hardware

## Glides and Levelers

### Plastic Flange Socket with 15mm Dowel and Screw

#### PT860-Y7-P2

For use with metal or plastic levelers.

Features:

- 330 lbs weight capacity
- Size – 15mm
- Type – flange socket, with exp dowel
- Finish – ABS plastic black



### Plastic Socket, Screw Mount

#### PT841-WO-P2

For use with metal or plastic levelers.

Features:

- 330 lbs weight capacity
- Type – socket, plastic
- Finish – ABS plastic black



### Plastic Socket, Knock In

#### PT840-F2-00

For use with metal or plastic levelers.

Features:

- 330 lbs weight capacity
- Size – 35mm diameter hole
- Type – socket, plastic
- Finish – ABS plastic black



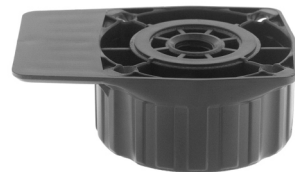
### Plastic Flange Socket with Hollow Bolt

#### PT860-YO-P2

For use with metal or plastic levelers.

Features:

- 330 lbs weight capacity
- Type – flange socket, with hollow bolt
- Finish – ABS plastic black



Glides and Levelers

**Plastic Leveler**

**PT450-10-P2** 3.5" - 4.75"

**PT450-11-P2** 4" - 5.25"

**PT450-13-P2** 4.5" - 6"

Socket and leveler combination with hollow bolt. Socket is permanently molded to the leveler.

Features:

- 330 lbs weight capacity
- Type – plastic leveler (450)
- Finish – ABS plastic black



**Plastic Leveler**

**PT448-16-P2** 6 5/16" - 9"

Socket and leveler combination with hollow bolt. Socket is permanently molded to the leveler.

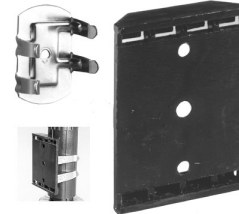
Features:

- 330 lbs weight capacity
- Type – plastic
- Finish – ABS plastic black



**Metal Levelers with ABS Sockets**

**PT202-V1-T2** Toe Kick, Screw Mount



**Metal Levelers with ABS Sockets**

**PT202-AN-C2** Toe Kick Clips, Groove

