

Stafast

Maverick Hardware

T-Nuts and Joint Connectors

Section O-4: Stafast

T-Nuts, Straight Barrel (4 Prongs)

T-Nuts are an economical method of fastening a metal mechanism to a component that is made of wood, plastic, particleboard, or pressboard, or for anchoring wooden components to each other. T-Nuts consist of a flat flange with a cylindrical barrel that is threaded to allow a bolt to engage the T-Nut. Prongs often extend from the flange to grip the material into which the T-Nut is being inserted.

Thread Sizes – 4 – 40 to 5/8” to 11”
 Barrel Heights – 1/8” to 7/8”

Stafast



<u>Part #</u>	<u>Thread Size</u>	<u>Flange Diameter</u>	<u>Barrel Height</u>	<u>Barrel Diameter</u>	<u>Prong Height</u>	<u>Material Thickness</u>	<u>Drill Size</u>
ST-381674T	5/16” - 18”	7/8”	3/8”	.370	9/32”	.055	3/8”
ST-142054T	1/4” - 20”		5/16”				
ST-561864T	3/8” - 16”	1”	7/16”	.440	5/16”	.063	29/64”

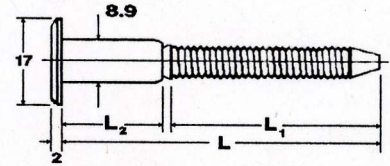
Joint Connector Bolt

Decorative Head with Shoulder, Type BA Low Profile Head

Low profile, high quality, 17mm decorative head bolt designed to connect components at right angles or parallel. The oversized shoulder is the same diameter as the JCN cap nut to allow for the same size pilot hole for both components and a matching appearance for through connection.

Available in Cross Recess, Cross Slot and Torx Drives.
 Material is made out of steel.
 Available in bronze, brass, black oxide, nickel and zinc plated finishes.

Stafast



<u>Part #</u>	<u>Thread Size</u>	<u>L</u>	<u>L, Minimum</u>	<u>staT NL2</u>
ST-BA142080UHDT-BZ	1/4” - 20”	3” (80mm)	1.378	.709

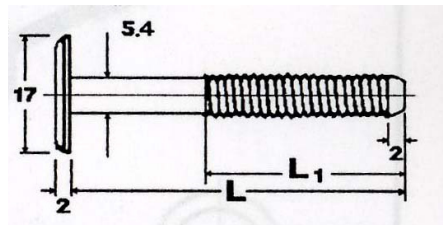
Joint Connector Bolt

Decorative Head, Type BB Low Profile Head

Low profile, high quality, decorative bolt with the same head size as the BA but without the shoulder. This makes the BB a more economical alternative to the BA. This product is typically used in conjunction with a variety of internally threaded inserts – T-Nuts or Cap Nuts.

Material is made out of steel or brass.
 Available in bronze, brass, black oxide, nickel and zinc plated finishes.

Stafast



<u>Part #</u>	<u>Screw Diameter</u>	<u>L</u>	<u>L, Minimum</u>	<u>Metric Hex Drive</u>
ST-BB142020UHD-BZ	1/4” - 20”	.787	.669	4
ST-BB142025UHD-BZ	1/4” - 20”	.984	.591	4
ST-BB142030UHD-BZ	1/4” - 20”	1.181	.787	4
ST-BB142035UHD-BZ	1/4” - 20”	1.375	1.181	4
ST-BB142040UHD-BZ	1/4” - 20”	1.578	1.181	4
ST-BB142045UHD-BZ	1/4” - 20”	1.772	1.181	4
ST-BB142050UHD-BZ	1/4” - 20”	1.969	1.181	4
ST-BB142060UHD-BZ	1/4” - 20”	2.359	1.575	4
ST-BB142070UHD-BZ	1/4” - 20”	2.756	1.575	4
ST-BB142080UHD-BZ	1/4” - 20”	3.150	1.575	4
ST-BB142090UHD-BZ	1/4” - 20”	3.547	1.575	4
ST-BB1420100UHD-BZ	1/4” - 20”	3.937		4

Joint Connectors

Joint Connector Screw

Decorative Head, Type BW Wood Screw

The BW wood screw's decorative head design is similar to the BB bolt. They are designed to join wood to wood at right angles. It is a unique thread design that allows the connector to join soft and medium density materials without the need for nut and bolt alignment.

Available with Hex and Cross Recess Drives.

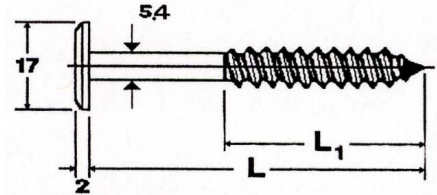
Optional drives – Pozi Drive and Torx

Thread type – Lag

Material – steel or brass

Available in Bronze, brass, black oxide, nickel and zinc plated finishes

Stafast



<u>Part #</u>	<u>Screw Diameter</u>	<u>L</u>	<u>L, Minimum</u>	<u>Pilot Hole Size</u>
ST-BW0770UHD-BZ	.275	2.756	2.362	3/16" - 7/32"

Joint Connector Screw

Decorative Small Head, Type CW Wood Screw

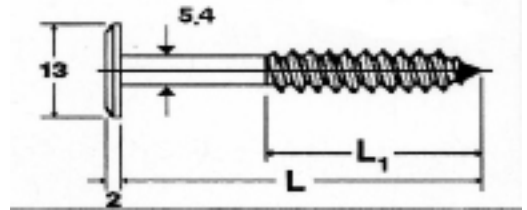
Features same low profile decorative head as BW but with smaller .511 (13mm) head. Small clean head design complements quality RTA products.

Thread type – Lag

Material – steel or brass

Available in bronze, brass, black oxide, nickel and zinc plated finishes

Stafast



<u>Part #</u>	<u>Screw Diameter</u>	<u>L</u>	<u>L, Minimum</u>	<u>Pilot Hole Size</u>
ST-CW0750UHD-BZ	.275	1.969	1.575	3/16" - 7/32"

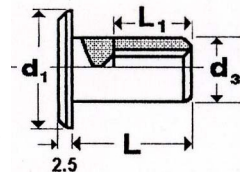
Joint Connector Nut

Steel Decorative Nut, Type JCN Cap Nut

Low profile, decorative head for exposed applications. Cap Nuts have the same head style as our connector bolts. This is ideal for joining materials when both sides of the connection are visible.

HDT = Hex Drive with a through hole

Stafast



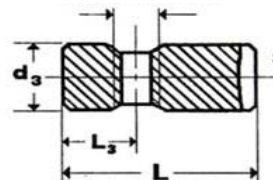
<u>Part #</u>	<u>Thread</u>	<u>L</u>	<u>L1 Minimum</u>	<u>d1</u>	<u>d3</u>	<u>Metric Hex Drive</u>
ST-JCN142012HDT-BZ	1/4" - 20"	.472	.295	.659	.50	5

Joint Connector Nut

Steel Dowel Nut, Type JCD Cross Dowel

Cross Dowel is made of steel for strength but very competitive in price to even plastic dowels. High torque values provide a secure joint at a right angle connection with bolt. A slot in outer surface eases alignment with the bolt. Cross Dowel and decorative bolt are ideal for connections requiring high strength values.

Stafast



<u>Part #</u>	<u>Thread Size</u>	<u>L</u>	<u>L3</u>	<u>d3</u>
ST-JCD14203010	1/4" - 20"	1.181	.394	.394

Maverick Hardware

Insert Nut

Section O-4: Stafast

Insert Nut

Speed Hex Drive – Threaded Inserts for Wood

Economical Die Cast Inserts

Inserts feature positive speed hex drive for quick engagement. With a flange to control depth or without for recessed or installation in curved material. The unique tapered external thread design with memory grooves assures positive locking resistance against pull out due to torsion or vibration. High retention values in blind, end and edge grain applications account for the popularity of this style insert.

Stafast



<u>Part #</u>	<u>Thread Size</u>	<u>Length</u>	<u>Pilot Hole Size</u>	<u>Metric Hex Drive</u>
ST-D142013-ZN	1/4" - 20"	.512		
ST-D142020-ZN	1/4" - 20"	.787	11/32" - 23/64"	6
ST-D381613-ZN	3/8" - 16"	.512	1/2" - 33/64"	10
ST-D381625-ZN	3/8" - 16"	.984	1/2" - 33/64"	10
ST-D561813-ZN	5/16" - 18"	.512	7/16" - 29/64"	8
ST-D561825-ZN	5/16" - 18"	.984	7/16" - 1/2"	8