

Section E-1: Wire Pulls and Epco Handles & Knobs

Wire Pulls & Epco Handles & Knobs

Section E-1: Wire Pulls and Epco Handles & Knobs

Maverick Hardware

Handles & Knobs

Stainless Steel Bow Pull

Features:

- Solid type 304 stainless steel
- Bar diameter is 10mm
- Includes (2) 8-32 x 1" screws
- Custom size available
- 32mm projection

<u>Part #</u>	<u>Center/Center</u>	<u>Length</u>
EPAP030-SS	3.00" (76mm)	3.62" (92mm)
EPAP096-SS	3.78" (96mm)	4.62" (118mm)
EPAP128-SS	5.04" (128mm)	6.00" (152mm)
EPAP160-SS	6.30" (160mm)	7.50" (190mm)
EPAP192-SS	7.56" (192mm)	9.00" (228mm)

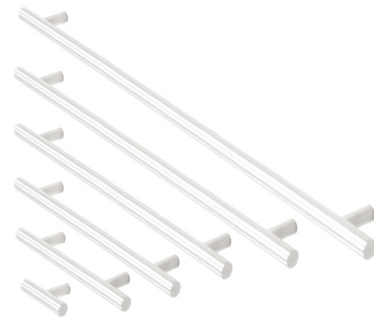


Stainless Steel Bar Pull

Features:

- Includes (2) 8-32 x 1" stainless screws
- Height drawer face to front edge of pull: 35mm (1 27/64")
- Bar diameter: 12mm (15/32")
- Gap between drawer face and pull: 23mm (29/32")
- Solid stainless steel

<u>Part #</u>	<u>Center/Center</u>	<u>Length</u>	<u>Finish</u>
EPBP010-SS	---	2.36" (60mm)	Stainless Steel
EPBP010-ORB	---	2.36" (60mm)	Oil Rubbed Bronze
EPBP030-SS	3.00" (76mm)	5.50" (140mm)	Stainless Steel
EPBP030-ORB	3.00" (76mm)	5.50" (140mm)	Oil Rubbed Bronze
EPBP035-SS	3.50" (89mm)	6.00" (152mm)	Stainless Steel
EPBP096-SS	3.78" (96mm)	6.14" (156mm)	Stainless Steel
EPBP096-ORB	3.78" (96mm)	6.14" (156mm)	Oil Rubbed Bronze
EPBP128-SS	5.04" (128mm)	7.40" (188mm)	Stainless Steel
EPBP128-ORB	5.04" (128mm)	7.40" (188mm)	Oil Rubbed Bronze
EPBP192-SS	7.56" (192mm)	9.84" (250mm)	Stainless Steel
EPBP192-ORB	7.56" (192mm)	9.84" (250mm)	Oil Rubbed Bronze
EPBP256-SS	10.08" (256mm)	13.23" (336mm)	Stainless Steel
EPBP256-ORB	10.08" (256mm)	13.23" (336mm)	Oil Rubbed Bronze
EPBP320-SS	12.60" (320mm)	15.75" (400mm)	Stainless Steel
EPBP320-ORB	12.60" (320mm)	15.75" (400mm)	Oil Rubbed Bronze
EPBP416-SS	16.38" (416mm)	19.53" (496mm)	Stainless Steel
EPBP480-SS	18.90" (480mm)	22.05" (560mm)	Stainless Steel
EPBP544-SS	21.42" (544mm)	24.57" (624mm)	Stainless Steel
EPBP640-SS	25.20" (640mm)	28.35" (720mm)	Stainless Steel
EPBP768-SS	30.24" (768mm)	33.39" (848mm)	Stainless Steel



Stainless Steel Round Knob

Features:

- Includes (2) 8-32 x 1" stainless screws
- Solid stainless steel

<u>Part #</u>	<u>Height</u>	<u>Diameter</u>	<u>Finish</u>
EPKP30-SS	1.38" (35mm)	1.18" (30mm)	Stainless Steel
EPKP30-ORB	1.38" (35mm)	1.18" (30mm)	Oil Rubbed Bronze



Stainless Steel Mushroom Knob

Features:

- Includes (2) 8-32 x 1" stainless screws
- Solid stainless steel

<u>Part #</u>	<u>Height</u>	<u>Diameter</u>
EPKP31-SS	1.06" (27mm)	1.22" (31mm)



Handles & Knobs

Satin Nickel Bar Pulls

Features:

- Glavanically protected satin nickel steel bar pull
- Copper plated, brass plated, twice nickel plated
- Includes (2) 8-32 x 1" steel screws
- Bar diameter 12mm (15/32")
- Gap between drawer face and pull 23mm (298/32")
- Leg diameter 10mm (25/64")
- Custom size available



<u>Part #</u>	<u>Center/Center</u>	<u>Length</u>	<u>Height</u>
EPNBP030-BN	3.00" (76mm)	5.50" (140mm)	35mm
EPNBP096-BN	3.78" (96mm)	6.14" (156mm)	35mm
EPNBP128-BN	5.04" (128mm)	7.40" (188mm)	35mm
EPNBP192-BN	7.56" (192mm)	9.84" (250mm)	35mm

Aluminum Architectural Drawer and Door Pulls

Features:

- Used for material thickness of 1/2" to 7/8"
- Back mounting
- Custom sizes available
- 1 1/2" and 3" pulls are polybagged and screws are bulk packaged.



<u>Part #</u>	<u>Center/Center</u>	<u>Length</u>	<u>Screws</u>	<u>Finish</u>
EPDP41-A1.5	1"	1 1/2"	#6 x 1/2"	Satin Clear Anodized
EPDP41-A-3	2"	3"	#6 x 1/2"	Satin Clear Anodized
EPDP41-BL-1.5	1"	1 1/2"	#6 x 1/2"	Satin Black Anodized
EPDP41-BL-3	2"	3"	#6 x 1/2"	Satin Black Anodized

Brass Drawer and Door Pulls

EPDP422-PB Polished Brass Finish

Features:

- 1 1/4" w 1 1/2" H
- Cast brass
- #4 x 1.2" screws
- Individually polybagged

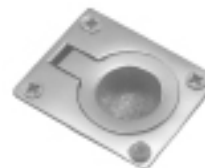


Brass Drawer and Door Pulls

EPDP423-PB Polished Brass Finish

Features:

- 1 1/2" W 1 3/4" H
- Cast brass
- #5 x 1/2" screws
- Individually polybagged



Brass Drawer and Door Pulls

EPDP424-PB Polished Brass Finish

Features:

- 1 1/2" Diameter
- Cast brass
- #4 x 1/2" screws
- Individually polybagged



Maverick Hardware

Handles & Knobs

Section E-1: Wire Pulls and Epcos Handles & Knobs

Sliding Door Pulls and Knobs

Features:

- Stick on pull
- Has pressure sensitive adhesive backing
- Plastic material



<u>Part #</u>	<u>Finish</u>
EPGP17-A	Aluminum
EPGP17-BL	Black
EPGP17-C	Clear

Wire Pulls

Features:

- Vertical 5/16"
- Height 1 5/16"



<u>Part #</u>	<u>Finish</u>	<u>Center Size</u>
WP3.10B	Oil Rubbed Bronze	3"
WP3.10B-EPCO	Oil Rubbed Bronze	3"
WP3.26	Chrome	3"
WP3.26D	Brushed Chrome	3"
WP3.3	Bright Brass	3"
WP3.4	Dull Brass	3"
WP3.BK	Black	3"
WP3.G10	Satin Nickel	3"
WP3.VB	Venetian Bronze	3"
WP3.WH	White	3"
WP35.10B	Oil Rubbed Bronze	3.5"
WP35.10B-EPCO	Oil Rubbed Bronze	3.5"
WP35.26	Chrome	3.5"
WP35.26D	Brushed Chrome	3.5"
WP35.3	Bright Brass	3.5"
WP35.4	Dull Brass	3.5"
WP35.BK	Black	3.5"
WP35.G10	Satin Nickel	3.5"
WP35.SS	Stainless Steel	3.5"
WP35.VB	Venetian Bronze	3.5"
WP4.10B	Oil Rubbed Bronze	4"
WP4.10B-EPCO	Oil Rubbed Bronze	4"
WP4.26	Chrome	4"
WP4.26D	Brushed Chrome	4"
WP4.3	Bright Brass	4"
WP4.4	Dull Brass	4"
WP4.G10	Satin Nickel	4"
WP4.VB	Venetian Bronze	4"
WP96.10B	Oil Rubbed Bronze	96mm
WP96.10B-EPCO	Oil Rubbed Bronze	96mm
WP96.26	Chrome	96mm
WP96.26D	Brushed Chrome	96mm
WP96.3	Bright Brass	96mm
WP96.4	Dull Brass	96mm
WP96.G10	Satin Nickel	96mm
WP96.SS	Stainless Steel	96mm
WP96.VB	Venetian Bronze	96mm

Sliding Door Pulls and Knobs

Features:

- Door thickness should be 1/4"
- Made out of aluminum
- Length is 2 3/4"



<u>Part #</u>	<u>Finish</u>
EPGP15-A	Satin Clear Anodized
EPGP15-B	Satin Brass Anodized
EPGP15-BL	Satin Black Anodized

Handles & Knobs

Recessed Pulls

Features:

- Dimensions 36mm (1.42") 85mm (3.35")
- Mounting hole 30mm (1.18") x 67mm (2.64") x 9mm (.35") deep
- Pulls mount flush with the face of your drawer or door
- Side screw, pin mounted or glue
- 304 Stainless steel

<u>Part #</u>	<u>Finish</u>
EPDP485-PC	Polished Chrome
EPDP485-SS	Stainless Steel



Recessed Pulls

Features:

- Dimensions 42mm (1.65") 115mm (4.55")
- Mounting hole 34mm (1.34") x 93mm (3.66") x 14mm (.55") deep
- Pulls mount flush with the face of your drawer or door
- Side screw, pin mounted or glue
- 304 Stainless steel

<u>Part #</u>	<u>Finish</u>
EPDP4115-PC	Polished Chrome
EPDP4115-SS	Stainless Steel



Recessed Pulls

Features:

- Mortises into a 2 3/4" x 7/8" opening
- Held by two #5 x 3/4" screws
- Solid brass
- 3/4" and up for door thickness

<u>Part #</u>	<u>Finish</u>
EPWP35-DB	Dull Brass
EPWP35-DC	Dull Chrome



Recessed Pulls

Features:

- Mortises into a 1 5/8" hole
- 1 13/16" in size
- Solid brass
- 1/8" for door thickness

<u>Part #</u>	<u>Finish</u>
EPWP36-DB	Dull Brass
EPWP36-DC	Dull Chrome



Maverick Hardware

Wood Pulls

Surface Mount Wood Pulls

Features:

- Surface mount
- Unfinished oak
- Individually poly bagged with (2) 8-32 x 1" screws



<u>Part #</u>	<u>Center/Center</u>	<u>Height</u>	<u>Length</u>	<u>Width</u>
EPWP22	3.78" (96mm)	1"	4 3/4"	3/8"

Surface Mount Wood Pulls

Features:

- Surface mount
- Unfinished oak
- Individually poly bagged with (2) 8-32 x 1" screws



<u>Part #</u>	<u>Center/Center</u>	<u>Height</u>	<u>Length</u>	<u>Width</u>
EPWP26	3.78" (96mm)	13/16"	4 1/2"	2 3/16"

Recessed Mount Wood Pulls

Features:

- Recessed Mount
- Unfinished oak
- No screws



<u>Part #</u>	<u>Center/Center</u>	<u>Height</u>	<u>Length</u>	<u>Width</u>
EPWP23	No holes	7/8"	4 3/32"	1 1/4"

Inset Size

<u>Length</u>	<u>Height</u>	<u>Depth</u>
3 19/32"	13/16"	5/16"

Recessed Mount Wood Pulls

Features:

- Recessed Mount
- Unfinished oak
- No screws



<u>Part #</u>	<u>Center/Center</u>	<u>Height</u>	<u>Length</u>	<u>Width</u>
EPWP24	No holes	27/32"	4 1/4"	2"

Inset Size

<u>Length</u>	<u>Height</u>	<u>Depth</u>
3 3/4"	1 13/16"	7/16"

Surface Mount Wood Pulls

Features:

- Surface mount - No insert
- Unfinished oak
- Individually polybagged with two 8-32 x 1" screws



<u>Part #</u>	<u>Center/Center</u>	<u>Height</u>	<u>Length</u>	<u>Width</u>
EPWP28	96mm	273/2"	4 1/2"	2 3/16"

Wood Pulls

Surface Mount Wood Pulls

Features:

- Surface mount – no inset
- Unfinished oak
- Individually poly bagged with (2) 8-32 x 1” screws

<u>Part #</u>	<u>Center/Center</u>	<u>Height</u>	<u>Length</u>	<u>Width</u>
EPWP30-3.5	3.5”	1 1/8”	4”	15/32”
EPWP30-96mm	96mm	1 1/8”	4 1/4”	15/32”



Surface Mount Wood Pulls

Features:

- Surface mount – no inset
- Unfinished oak
- Individually poly bagged with (2) 8-32 x 1” screws

<u>Part #</u>	<u>Center/Center</u>	<u>Height</u>	<u>Length</u>	<u>Width</u>
EPWP32	3 1/2”	1 1/4”	4 1/8”	5/8”



Maverick Hardware

Conversion Charts

INCHES TO MILLIMETERS		MILLIMETERS INTO INCHES				FRACTIONS INTO MILLIMETERS		
Inches	Millimeters	MM	Inches	MM	Inches	Fraction	Inches	MM
1	25.40	1	0.0394	51	2.0079	1/64	0.015620	0.3969
2	50.80	2	0.0787	52	2.0472	1/32	0.031250	0.7938
3	76.20	3	0.1181	53	2.0866	3/64	0.046875	1.1906
4	101.60	4	0.1575	54	2.1260	1/16	0.062500	1.5875
5	127.00	5	0.1969	55	2.1654	5/64	0.078125	1.9844
6	152.40	6	0.2362	56	2.2047	3/32	0.093750	2.3813
7	177.80	7	0.2756	57	2.2441	7/64	0.109375	2.7781
8	203.20	8	0.315	58	2.2835	1/8	0.125000	3.1750
9	228.60	9	0.3543	59	2.3228	9/64	0.140625	3.5719
10	254.00	10	0.3937	60	2.3622	5/32	0.156250	3.9688
11	279.40	11	0.4331	61	2.4016	11/64	0.171875	4.3656
12	304.80	12	0.4724	62	2.4409	3/16	0.187500	4.7625
13	330.20	13	0.5118	63	2.4803	13/64	0.203125	5.1594
14	355.60	14	0.5512	64	2.5197	7/32	0.218750	5.5563
15	381.00	15	0.5906	65	2.5591	15/64	0.234375	5.9531
16	406.40	16	0.6299	66	2.5984	1/4	0.250000	6.3500
17	431.80	17	0.6693	67	2.6378	17/64	0.265625	6.7469
18	457.20	18	0.7087	68	2.6772	9/32	0.281250	7.1438
19	482.60	19	0.748	69	2.7165	19/64	0.296875	7.5406
20	508.00	20	0.7874	70	2.7559	5/16	0.312500	7.9375
21	533.40	21	0.8268	71	2.7953	21/64	0.328125	8.3344
22	558.80	22	0.8661	72	2.8346	11/32	0.343750	8.7313
23	584.20	23	0.9055	73	2.8740	23/64	0.359375	9.1281
24	609.60	24	0.9449	74	2.9134	3/8	0.375000	9.5250
25	635.00	25	0.9843	75	2.9528	25/64	0.390625	9.9219
26	660.40	26	1.0236	76	2.9921	13/32	0.406250	10.3188
27	685.80	27	1.063	77	3.0315	27/64	0.421875	10.7156
28	711.20	28	1.1024	78	3.0709	7/16	0.437500	11.1125
29	736.60	29	1.1417	79	3.1102	29/64	0.453125	11.5094
30	762.00	30	1.1811	80	3.1496	15/32	0.468750	11.9063
31	787.40	31	1.2205	81	3.1890	31/64	0.484375	12.3031
32	812.80	32	1.2598	82	3.2283	1/2	0.500000	12.7000
33	838.20	33	1.2992	83	3.2677	33/64	0.515625	13.0969
34	863.60	34	1.3386	84	3.3071	17/32	0.531250	13.4938
35	889.00	35	1.378	85	3.3465	35/64	0.546875	13.8906
36	914.40	36	1.4173	86	3.3858	9/16	0.562500	14.2875
37	939.80	37	1.4567	87	3.4252	37/64	0.578125	14.6844
38	965.20	38	1.4961	88	3.4646	19/32	0.593750	15.0813
39	990.60	39	1.5354	89	3.5039	39/64	0.609375	15.4781
40	1016.00	40	1.5748	90	3.5433	5/8	0.625000	15.8750
41	1041.40	41	1.6142	91	3.5827	41/64	0.640625	16.2719
42	1066.80	42	1.6535	92	3.6220	21/32	0.656250	16.6688
43	1092.20	43	1.6929	93	3.6614	43/64	0.671875	17.0656
44	1117.60	44	1.7323	94	3.7008	11/16	0.687500	17.4625
45	1143.00	45	1.7717	95	3.7402	45/64	0.703125	17.8594
46	1168.40	46	1.811	96	3.7795	23/32	0.718750	18.2563
47	1193.80	47	1.8504	97	3.8189	47/64	0.734375	18.6531
48	1219.20	48	1.8898	98	3.8583	3/4	0.750000	19.0500
49	1244.60	49	1.9291	99	3.8976	49/64	0.765625	19.4469
50	1270.00	50	1.9685	100	3.9370	25/32	0.781250	19.8438
100	2540.00					51/64	0.796875	20.2406
200	5080.00					13/16	0.812500	20.6375
300	7620.00					53/64	0.828125	21.0344
400	10160.00					27/32	0.843750	21.4313
500	12700.00					55/64	0.859375	21.8281
1000	25400.00					7/8	0.875000	22.2250
						57/64	0.890625	22.6219
						29/32	0.906250	23.0188
						59/64	0.921875	23.4156
						15/16	0.937500	23.8125
						61/64	0.953125	24.2094
						31/32	0.968750	24.6063
						63/64	0.984375	25.0031
						1	1.000000	25.4000